



拓尔思

拓尔思

拓尔思

拓尔思

拓尔思

拓尔思

拓尔思

拓尔思

拓尔思

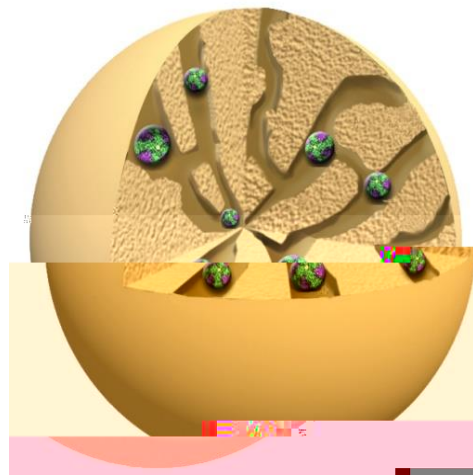
拓尔思

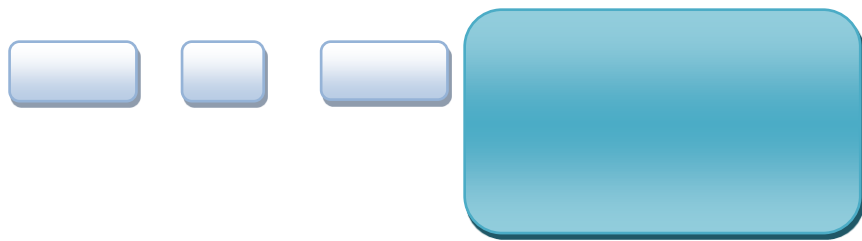








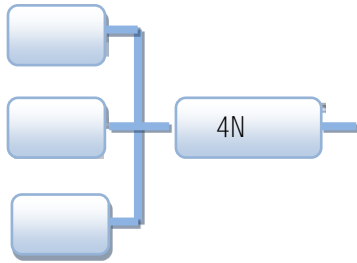






" "

" "



/

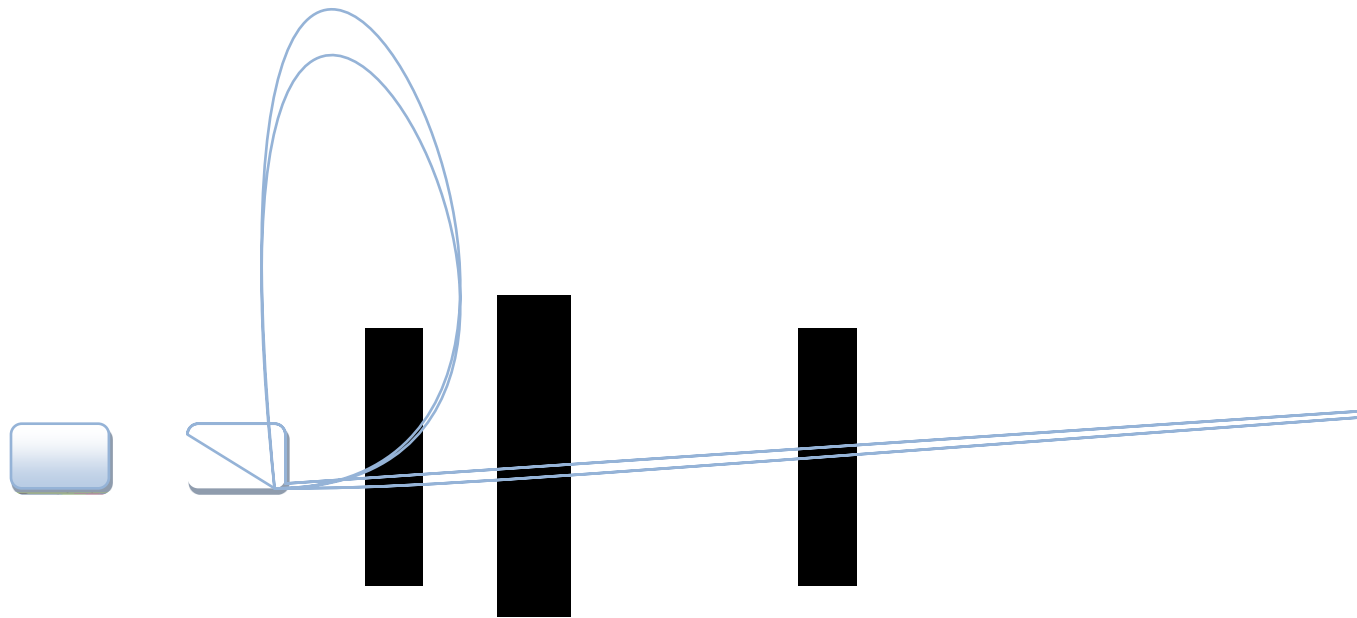
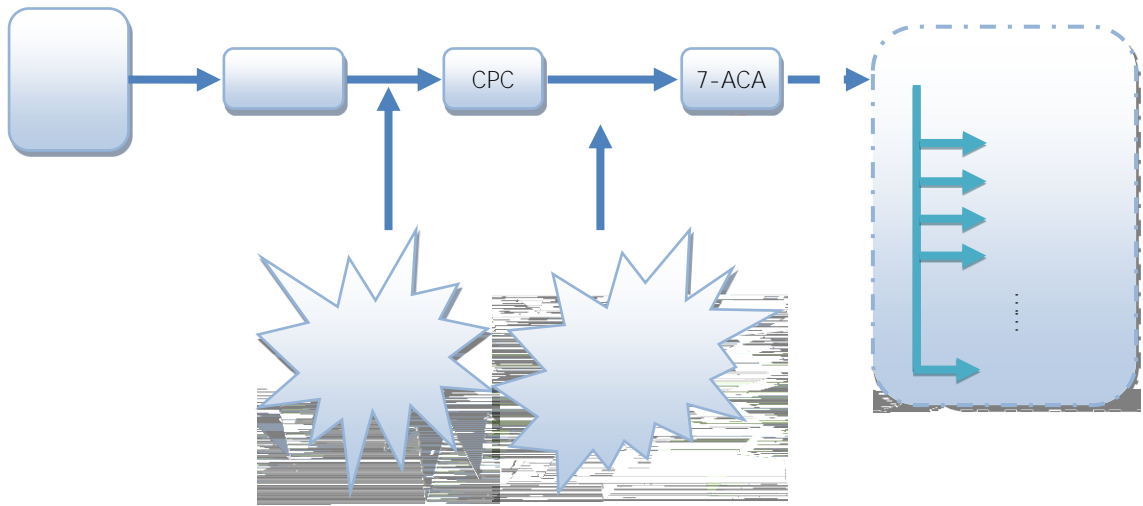
-

"

"

- -

- - -



-

-

-

-

-

-

-

-

-

-

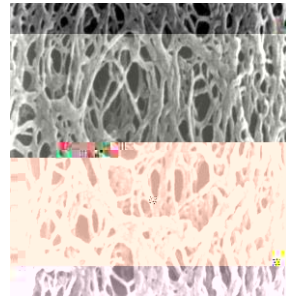
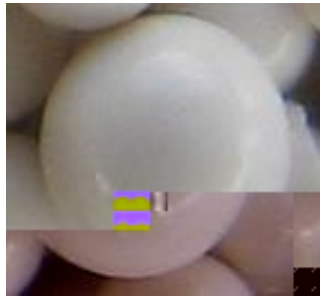




1

4

1



CPC

-



3

2

"



5

“

”



1

-

-

1



1		3,397,105	83,874,522.45
2		1,797,305	44,375,460.45
		5,194,410	128,249,982.90

12,825.00

12,825.00

2020 9 30

214,577,642

2

—

2020 11 3

<

>

	61011119671019****

	51010219690702****
	99





1

" "

-

#



A

20 = 20 /
20 80% 24.94 /
2019
2019 10
2.50 24.94 / 24.69
/

1

2

2020 11 3

(A)

1.00

12,825.00

1

44,375,460.45

2

83,874,522.45

12,825.00

12,825.00

1

-

2



3

1

2





.

9

27,014.38

10.94%







三、保荐机构（主承销商）声明（一）

本公司已对募集说明书进行了核查，确认本募集说明书内容真实、准确、完整。

||||

39

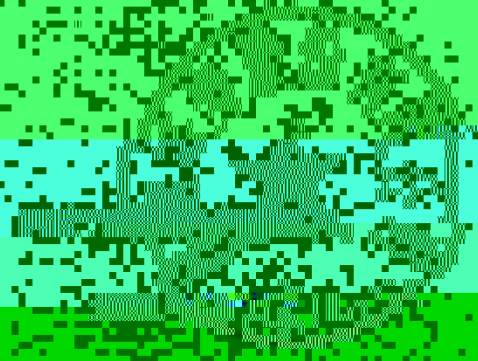
||||

||||

||||

||||

||||



四、保荐机构（主承销商）声明（一）

吴 坚







3

"

"

ù

ç

%

（本页无正文，为《西安蓝晓科技新材料股份有限公司向特定对象发行股票募集说明书》之“发行人与中介机构盖章页”）

